



**Melbourne  
Chess Club**  
*Celebrating 150 Years*

## DIS 2016 Australian Women's Masters

Bulletin 2 – Round 2 Friday January 15, 2016  
Editor: Kerry Stead

If there was any doubt that the 2016 Australian Women's Masters was going to be a close event, this was removed by the end of round 2, with all players now on the scoreboard! Only Xiaobing Gu has a perfect score & the other nine players are all within a point of each other!

Round two saw four of five games being decisive, with players pushing for every point & half point they can get. The most dramatic of those was the game between Maria Gosciniak & Xiaobing Gu, which saw Gosciniak losing on time when she held a slight edge!

Eva Wang has come into the reserves tournament as a replacement for Megan Setiabudi, who was a late withdrawal! A big thanks to Eva for coming into the tournament at such short notice!

In the Reserves tournament, top seed Narelle Szuveges leads after another win, while Eva Wang got off to a winning start in her first game & now shares second place with Tanya Krstevska.



*Round 2 underway at Melbourne Chess Club*

### Round 2 Masters Results

1 Kristyna Novosadova	2231	0:1	Hanna Leks	2192
2 Deimante Daulyte	2378	1:0	Ticia Gara	2347
3 Anita Stangl	2052	½:½	Jilin Zhang	2250
4 Julia Ryjanova	2387	1:0	Irina Berezina	2178
5 Maria Gosciniak	2090	0:1	Xiaobing Gu	2286

### Round 2 Reserves Results

1 Niruruthi Ravichandren	1368	0:1	Eva Wang	1293
2 Lillian Lu	1521	0:1	Tanya Krstevska	1584
3 Narelle Szuveges	1800	1:0	Jody Middleton	1494

## Round 2 Game summary

Hana Leks played the Boleslavsky line of the Classical Sicilian against Krystina Novosadova & quickly created strong threats with her queen, bishop & knight. These threats allowed Leks to win material early & Novosadova tried drastic action to turn the game around, however Leks defended well, consolidated her position & with a passed pawn about to promote, Novosadova was forced to resign.

Deimante Daulyte & Ticia Gara played an unusual line of the Sicilian, with many early minor piece manoeuvres. Gara developed some threats against Daulyte's king, however these were neutralised by Daulyte. After a long struggle, Daulyte eventually prevailed.

Jilin Zhang played a Najdorf Sicilian against Anita Stangl & found an exchanging tactic to achieve equality early in the game. Just when Zhang seemed to be getting the better of the clash, with threatening bishops & pressure down the d-file, the players repeated the position & agreed to a draw.

Julia Ryjanova played a nice attacking game against Irina Berezina on the white side of a King's Indian Defence. Berezina blocked the central pawns early in the game, however this allowed Ryjanova to open lines on the kingside in front of Berezina's king. Although Berezina tried to hold off the attack, the strength of Ryjanova's attack proved too much & Berezina was forced to resign.

Maria Gosciniak played aggressively against Xiaobing Gu's Najdorf Sicilian & had a significant advantage in the middlegame, with a strong centralised knight & dominating rook. However Gosciniak did not continue this aggression into the late middlegame & this allowed Gu to get back into the game. Unfortunately for Gosciniak, she overstepped the time limit with only two moves to the time control & this handed the game to Gu.

In the Reserves, Eva Wang punished an opening inaccuracy by Niruruthri Ravichandren to win an exchange. She continued to pressure Ravichandren's exposed king & won more material before swapping pieces off to head into a simple winning ending to take the win. Tanya Krstevska won a pawn in the middlegame against Lillian Lu before exchanging into a middlegame with two bishops against a rook. Krstevska's bishops combined well to overpower Lu's rook & when Lu had to give up the rook for a pawn, the end was not far away. Narelle Szuveges won a pawn in a rook endgame against Jody Middleton & converted it to keep her lead in the tournament.



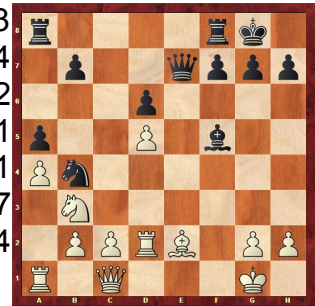
*Round 2 of the Australian Women's Masters at the Melbourne Chess Club*

## Round 2 Masters Games

### Novisadova, Kristyna (2231) - Leks, Hanna (2192) [B59]

2016 Australian Womens Masters Melbourne (2.1), 15.01.2016

1.e4 c5 2.Nf3 d6 3.d4 cxd4 4.Nxd4 Nf6 5.Nc3 Nc6 6.Be2 e5 7.Nb3 Be7 8.0-0 0-0 9.Be3 a5 10.a4 Nb4 11.Nd5 Nfxd5 12.exd5 Bg5 13.f4 exf4 14.Bxf4 Bxf4 15.Rxf4 Qg5 16.Rd4 Bf5 17.Qc1 Qe7 18.Rd2 (Diagram) Qe3+ 19.Kf1 Nxc2 20.Rxc2 Qxb3 21.Rd2 Rac8 22.Qe1 Rfe8 23.Qf2 Re5 24.Rad1 Qxa4 25.Bf3 Rc5 26.Rd4 Qb5+ 27.Kg1 Rc2 28.Qh4 Qb6 29.b4 axb4 30.Kh1 Rb2 31.Ra1 h6 32.h3 Kh7 33.Ra8 g5 34.Rh8+ Kxh8 35.Qxh6+ Kg8 36.Qxg5+ Bg6 37.Qh4 Rb1+ 38.Kh2 b3 39.Bd1 Rxd1



0-1

### Daulyte, Deimante (2378) - Gara, Ticia (2347) [B23]

2016 Australian Womens Masters Melbourne (2.2), 15.01.2016

1.e4 c5 2.Nc3 Nc6 3.Bb5 Nd4 4.Nf3 a6 5.Bc4 b5 6.Bd5 Rb8 7.Nxd4 cxd4 8.Ne2 Nf6 9.Bb3 Nxe4 10.Nxd4 e6 11.0-0 Nc5 12.Qe2 Nxb3 13.axb3 Qb6 14.Nf3 Bb7 15.d3 Bd6 16.Ng5 Qc6 17.Ne4 0-0 18.f3 Be5 19.c3 f5 20.Ng5 Qc7 21.f4 Bd6 22.Nf3 b4 23.Bd2 Rf6 24.Ne5 bxc3 25.bxc3 Bxe5 26.fxe5 Rg6 27.Rf2 Qc6 28.b4 Rf8 29.Ra2 f4 30.Bxf4 Qxc3 31.Rc2 Qa1+ 32.Rc1 Qd4 33.Bg3 Qxb4 34.Rxf8+ Qxf8 35.Qb2 Bc6 36.Qb6 h5 37.Rc2 Kh7 38.Rf2 Qe7 39.Qxa6 h4 40.Bf4 h3 41.g3 Rg4 42.Qa1 Qc5 43.Qf1 Qd5 44.Qxh3+ Kg8 45.Rf1 Bb7 46.Kf2 Qd4+ 47.Ke1 Rg6 48.g4 Qc3+ 49.Kf2 Qb2+ 50.Kg3 Qe2 51.Rf2 Qxd3+ 52.Kh4 Qd1 53.Qg3 Kh7 54.h3 Be4 55.Qe3 Qh1 56.Rh2 Qb1 57.Rd2 Bd5 58.Qe2 and white won in 65 moves

1-0

### Stangl, Anita (2052) - Zhang, Jilin (2250) [B86]

2016 Australian Womens Masters Melbourne (2.3), 15.01.2016

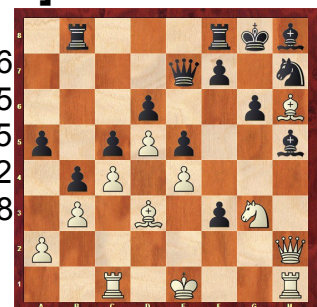
1.e4 c5 2.Nf3 d6 3.d4 cxd4 4.Nxd4 Nf6 5.Nc3 a6 6.Bc4 e6 7.a3 Be7 8.0-0 0-0 9.f4 Nxe4 10.Nxe4 d5 11.Bd3 dxe4 12.Bxe4 Nd7 13.c3 Nf6 14.Bc2 g6 15.Qe2 Qc7 16.h3 b6 17.g4 Bb7 18.Be3 Nd5 19.Bd2 Bf6 20.Qf2 Rad8 21.Rac1 Ne7 22.Be3 Nd5 23.Bd2 Ne7 24.Be3 Nd5

1/2-1/2

### Ryjanova, Julia (2387) - Berezina, Irina (2178) [E81]

2016 Australian Womens Masters Melbourne (2.4), 15.01.2016

1.d4 Nf6 2.c4 g6 3.Nc3 Bg7 4.e4 d6 5.f3 0-0 6.Bg5 a6 7.Qd2 c6 8.Nge2 b5 9.Ng3 Nbd7 10.Rc1 Rb8 11.b3 b4 12.Nd1 e5 13.d5 c5 14.Bd3 a5 15.h4 h5 16.Ne2 Qe8 17.g4 hxg4 18.Ng3 gxf3 19.h5 Ng4 20.Nf2 Ndf6 21.h6 Bh8 22.Nxg4 Bxg4 23.h7+ Nxh7 24.Qh2 Bh5 25.Bh6 Qe7 (Diagram) 26.Nxh5 Rfd8 27.Ng3 Bf6 28.Be3 Nf8 29.Kf2 Bg7 30.Rcg1 f6 31.Nf5 Qd7 32.Bh6

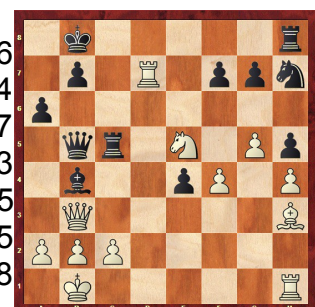


1-0

### Gosciniak, Maria (2090) - Gu, Xiaobing (2286) [B97]

2016 Australian Womens Masters Melbourne (2.5), 15.01.2016

1.e4 c5 2.Nf3 d6 3.d4 cxd4 4.Nxd4 Nf6 5.Nc3 a6 6.Bg5 e6 7.f4 Qb6 8.Qd2 Nbd7 9.0-0-0 Be7 10.g4 h6 11.Bxf6 Nxf6 12.Be2 Bd7 13.h4 0-0-0 14.g5 Nh7 15.Kb1 Kb8 16.Bg4 Rc8 17.Nd5 exd5 18.Bxd7 Rc7 19.Bg4 dxe4 20.Nf5 d5 21.Qxd5 Bb4 22.Qb3 h5 23.Bh3 Qa5 24.Ne3 Rc5 25.Nc4 Qc7 26.Rd7 Qc6 27.Ne5 Qb5 (Diagram) 28.a3 Ba5 29.Qxb5 Rxb5 30.Bf1 Rb6 31.Nc4 Rb5 32.Nxa5 Rxa5 33.Be2 Rf5 34.Rf1 Nf8 35.Re7 Ng6 36.Rxe4 Nxh4 37.Rh1 Ng6 38.Rxh5 Rd8



39.Bc4

0-1

### Round 2 Reserves Games

#### **Ravichandren,Niruruthri (1368) - Wang,Eva (1293) [A16]**

2016 Australian Women's Reserves Melbourne (2.1), 15.01.2016

1.c4 d5 2.cxd5 Nf6 3.Nc3 Nxd5 4.e4 Nxc3 5.bxc3 e5 6.d4 exd4 7.cxd4 Bb4+ 8.Bd2 Qxd4 9.Qa4+ Bd7 10.Qxb4 Qxa1+ 11.Ke2 Bc6 12.Nf3 Na6 13.Qa3 Qb1 14.e5 Bb5+ 15.Ke3 Bxf1 16.Ba5 0-0-0 17.Nd2 Qd3+ 18.Qxd3 Bxd3 19.Nf3 Bc2 20.Rc1 Rd5 21.Bxc7 Kxc7 22.Rxc2+ Rc5 23.Rd2 Rd8 24.Nd4 Rxe5+ 25.Kf4 Red5 26.Rc2+ Kb8 27.Nf5 Rc5 28.Rxc5 Nxc5 29.Nxg7 Ne6+ 30.Nxe6 fxe6 31.Ke5 Rd2 32.f4 Rxc2 33.Kxe6 Rxh2 34.f5 Rxa2 35.f6 Rf2 36.f7 a5 37.Ke7 a4 38.f8N Rxf8 39.Kxf8 a3 40.Kg7 a2 41.Kxh7 a1Q 42.Kg6 b5 43.Kf5 b4 44.Ke4 b3 45.Kd3 b2 46.Ke4 b1Q+

0-1

#### **Lu,Lillian (1521) - Krstevska,Tanya (1584) [B27]**

2016 Australian Women's Reserves Melbourne (2.2), 15.01.2016

1.e4 c5 2.c3 g6 3.d4 cxd4 4.cxd4 d5 5.e5 Nc6 6.Nf3 Bg7 7.Nc3 a6 8.h3 e6 9.a3 Nge7 10.Bd3 0-0 11.Be3 b5 12.0-0 Nf5 13.Qd2 Nxe3 14.Qxe3 Qb6 15.b4 Bd7 16.Rfd1 Rac8 17.Ne2 a5 18.Qd2 axb4 19.axb4 Ra8 20.Qb2 Rfc8 21.Rdc1 Bf8 22.Rxa8 Rxa8 23.Ng3 Nxb4 24.Bb1 Nc6 25.Bd3 b4 26.Ne2 Ra3 27.Rb1 Rxd3 28.Ne1 Rxd4 29.Nxd4 Qxd4 30.Qxd4 Nxd4 31.Nd3 Nc6 32.Kf1 Bc8 33.Ke1 Ba6 34.Rc1 Bxd3 35.Rxc6 Bc4 36.Rc8 Kg7 37.Ra8 b3 38.Kd2 Bb4+ 39.Kc1 Bc3 40.Rb8 Bxe5 41.Rb4 b2+ 42.Kb1 Bd3+ 43.Ka2 b1Q+ 44.Rxb1 Bxb1+ 45.Kxb1 Bd4 46.f3 e5 47.Kc2 Kf6 48.Kd3 Kf5 49.Ke2 Kf4 50.Kd3 f5 51.Ke2 Bg1 52.Kf1 Ke3 53.Kxg1 Ke2 54.g4 d4 55.gxf5 gxf5 56.Kg2 d3 57.Kg3 d2 58.f4 d1Q 59.fxe5 Qg1+ 60.Kf4 Qf2+ 61.Kg5 Qg3+ 62.Kxf5 Qg6+ 63.Kf4 Kd3 64.h4 Kd4 65.h5 Qxh5 66.e6 Qe5+ 67.Kg4 Ke4 68.e7 Qxe7 69.Kg3 Qf6 70.Kg4 Qg6+ 71.Kh4 Kf4 72.Kh3 Qg3#

0-1

#### **Szuveges,Narelle (1800) - Middleton,Jody (1494) [D13]**

2016 Australian Women's Reserves Melbourne (2.3), 15.01.2016

1.d4 d5 2.c4 c6 3.cxd5 cxd5 4.Nf3 Nf6 5.Nc3 Nc6 6.Bf4 Bf5 7.e3 e6 8.Bd3 Bxd3 9.Qxd3 Be7 10.0-0 0-0 11.Rac1 a6 12.Na4 Ne4 13.Nd2 Nb4 14.Qe2 Rc8 15.Nxe4 dxe4 16.Nc5 Bxc5 17.Rxc5 Rxc5 18.dxc5 Nd3 19.Bd6 Re8 20.f3 f5 21.fxe4 fxe4 22.Qh5 Nxb2 23.Rb1 Nc4 24.Rxb7 Nxd6 25.cxd6 Rf8 26.Qe5 Qf6 27.Qxf6 gxf6 28.Ra7 Rd8 29.Rxa6 Rd7 30.Rc6 Kf7 31.a4 Ke8 32.a5 Ra7 33.a6 Kd7 34.Rb6 Ra8 35.Kf2 f5 36.g3 h6 37.h4 h5 38.Ke2 Kd8 39.Kd2 Kd7 40.Kc3 e5 41.Kc4 Ke6 42.d7+ Kxd7 43.Kd5 Kc7 44.Re6 f4 45.gxf4 exf4 46.exf4 e3 47.Rxe3 Rxa6 48.Re7+ Kd8 49.Rh7 Ke8 50.f5 Ra5+ 51.Ke6 Ra6+ 52.Ke5 Ra5+ 53.Kf6 Kd8 54.Rxh5 Ra6+ 55.Kg7 Ra7+ 56.Kg6 Ra1 57.f6 Rg1+ 58.Rg5 Rf1 59.f7 Ke7 60.Re5+ Kd7 61.Rf5 Rxf5 62.Kxf5 Ke7 63.Kg6 Kf8 64.h5 Ke7 65.Kg7 Ke6 66.f8Q Kd7 67.Qf6 Kc7 68.Kg6 Kd7 69.h6 Ke8 70.Qf7+ Kd8 71.h7 Kc8 72.h8R#

1-0

### Tournament Scores

#### Masters

Xiaobing Gu 2; Deimante Daulyte 1.5;  
Jilin Zhang, Ticia Gara, Julia Ryanova,  
Irina Berezina & Hanna Leks 1;  
Anita Stangl, Maria Gosciniak &  
Kristyna Novosadova 0.5;

#### Reserves

Narelle Szuveges 2; Tanya Krstevska &  
Eva Wang Jody Middleton & Lillian Lu 0.5;  
Niruruthi Ravichandren 0;