



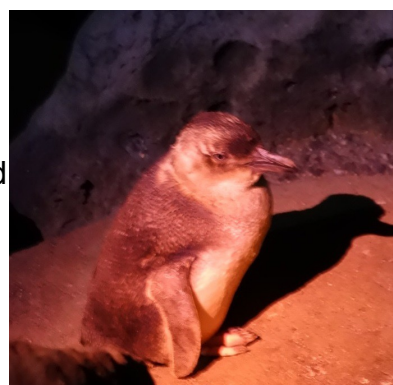
**Melbourne
Chess Club**
Celebrating 150 Years

DIS 2016 Australian Women's Masters

Bulletin 4 – Round 4 Sunday January 17, 2016
Editor: Kerry Stead

Round 4 saw tournament leaders Xiaobing Gu & Deimante Daulyte continue their winning ways to stretch their advantage over the rest of the field, however Gu retains her half point lead over Daulyte. A mid-pack group is also emerging, with Ticia Gara on 2.5, with Jilin Zhang & defending champion Julia Ryjanova half a point behind on 2 points.

The Reserves tournament has come alive with Narelle Szuveges unable to win a game on the double round day & Jody Middleton winning both her games to now only be separated by half a point.



Penguin at St Kilda



The most notable events of the day happened away from the chess board, with a post-game trip for players around parts of Port Phillip Bay, including penguin viewing at St Kilda Pier & a trip to iconic Brighton Beach, with its famous bathing boxes.

CBD skyline from Brighton Beach

Round 4 Masters Results

1 Kristyna Novosadova	2231	0:1	Deimante Daulyte	2378
2 Anita Stangl	2052	1:0	Hanna Leks	2192
3 Julia Ryjanova	2387	½:½	Ticia Gara	2347
4 Maria Gosciniak	2090	½:½	Jilin Zhang	2250
5 Xiaobing Gu	2286	1:0	Irina Berezina	2178

Round 4 Reserves Results

1 Niruruthi Ravichandren	1368	1:0	Lillian Lu	1521
2 Narelle Szuveges	1800	½:½	Eva Wang	1293
3 Jody Middleton	1494	1:0	Tanya Krstevska	1584

Round 5 Reserves Results

1 Tanya Krstevska	1584	1:0	Niruruthi Ravichandren	1368
2 Eva Wang	1293	0:1	Jody Middleton	1494
3 Lillian Lu	1521	½:½	Narelle Szuveges	1800

Round 4 Game summary

Deimante Daulyte played the Ragozin variation in response to Krystina Novosadova's Queen's Gambit & generated play on the kingside. Novosadova found some play on the queenside in return, however after a series of exchanges it was Daulyte who emerged with an extra pawn. Daulyte was then able to exchange into a favourable knight against bishop endgame & when she won another pawn Novosadova resigned.

Anita Stangl played the Sozin variation against Hanna Leks' Sicilian Defence & the players were soon out of theoretical territory. Stangl launched an attack on the kingside, while Leks attacked on the queenside, with Stangl sacrificing an exchange to continue her attack. Leks returned the exchange to slow Stangl's attack, however Stangl won a pawn in the process & managed to win a second pawn before heading into a queen & rook endgame. Stangl exchanged queens & improved her king & rook, forcing Leks to resign.

Julia Ryjanova & Ticia Gara played a Neo-Grinfeld, with Gara getting good piece play, while Ryjanova looked to maintain her cramping d-pawn. A series of exchanges saw Ryjanova win a pawn, but Gara practically trapped one of Ryjanova's bishops, so she sacrificed an exchange. The players then headed into an endgame with Ryjanova's bishop pair & two extra pawns against Gara's rook, knight & pawns. After trading minor pieces, Gara's active king & rook were able to neutralise Ryjanova's pawns & a draw was agreed.

Jilin Zhang employed a Hedgehog System in response to Maria Gosciniak's Maroczy Bind. Early exchanges on the queenside saw the position simplify slightly in Zhang's favour, however further exchanges saw the players reach a drawn rook endgame.

Xiaobing Gu played the Austrian Attack against Irina Berezina's Pirc Defence & made the most of her space advantage in the opening. Although Berezina tried exchanging pieces to make her defensive task easier, the resulting position left her with a horrible bishop & passive king & rook, so she resigned, giving Gu another win for the tournament.

The Reserves played two rounds, so that they could fit in an extra round for their double round robin. The big mover of the day was Jody Middleton, who won both her games, while early leader Narelle Szuveges drew both her games to retain her lead, but it is now only half a point.

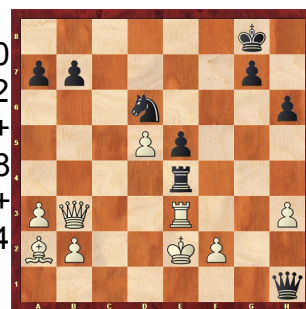
Round 4 Masters Games

Novosadova, Krystina (2231) - Daulyte, Deimante (2378) [D38]

2016 Australian Womens Masters Melbourne (4.1), 17.01.2016

1.d4 d5 2.Nf3 Nf6 3.c4 e6 4.Bg5 h6 5.Bxf6 Qxf6 6.Nc3 Bb4 7.e3 0-0
8.Rc1 Nc6 9.a3 Bxc3+ 10.Rxc3 dxc4 11.Bxc4 e5 12.d5 Rd8 13.Ba2
Bg4 14.h3 Bh5 15.Qb3 Bxf3 16.gxf3 Qxf3 17.Rg1 Ne7 18.Rg3 Qh1+
19.Ke2 Nf5 20.Rf3 Nd6 21.Rxc7 Rac8 22.Rxf7 Rxc7 23.Rxc7 Rf8
24.e4 Rf4 25.Rc3 Rxe4+ 26.Re3 (Diagram) Qxh3 27.Bb1 Qg4+
28.Kf1 Rxe3 29.fxe3 Qc4+ 30.Qxc4 Nxc4 31.Kf2 Nxb2 32.Kf3 Nc4
33.Ba2 Nd6 34.Kg4 g6

0-1



Stangl, Anita (2052) - Leks, Hanna (2192) [B57]

2016 Australian Womens Masters Melbourne (4.2), 17.01.2016

1.e4 c5 2.Nf3 d6 3.d4 cxd4 4.Nxd4 Nf6 5.Nc3 Nc6 6.Bc4 Qb6 7.Nde2 g6 8.0-0 Bg7 9.Bf4
0-0 10.Bb3 a6 11.Qd2 Re8 12.Bh6 Bh8 13.Ng3 Qc7 14.h4 Na5 15.Rad1 Be6 16.Bxe6
fxe6 17.Nce2 Nc4 18.Qc1 Ng4 19.b3 Nb2 20.Rde1 Rac8 21.Qg5 Nxh6 22.Qxh6 Qxc2
23.h5 Bg7 24.Qg5 Nd3 25.hxg6 h6 26.Qg4 Nxe1 27.Qxe6+ Kh8 28.Rxe1 Qd2 29.Rf1 Rc5
30.Nf5 Rf8 31.Qxe7 Rxf5 32.exf5 Rxf5 33.Ng3 Rf8 34.Nh5 Qd4 35.Nxg7 Qxg7 36.Qxd6
Rf6 37.Qd8+ Rf8 38.Qd3 Rf6 39.Re1 Qxg6 40.Qxg6 Rxg6 41.Re8+ Kg7 42.Re7+ Kf6
43.Rxb7 Ke5 44.Rb4 Kd5 45.g3 Kc5 46.Rh4 a5 47.Kg2 Rf6 48.a3 Rb6 49.b4+ axb4
50.axb4+ Kd5 51.Rf4 Ke5 52.Kh3 Rb5 53.Kg4 Ke6 54.Rc4 Kf6 55.Kf4 Kg6 56.Ke4 h5

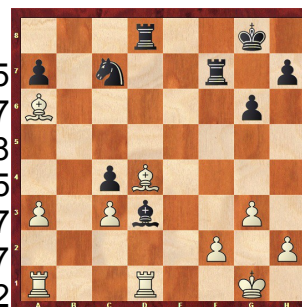
57.Kd4 Rf5 58.Rc2 Rf3 59.Rb2

1-0

Ryjanova,Julia (2387) - Gara,Ticia (2347) [D72]

2016 Australian Womens Masters Melbourne (4.3), 17.01.2016

1.d4 Nf6 2.c4 g6 3.g3 Bg7 4.Bg2 d5 5.cxd5 Nxd5 6.e4 Nb6 7.Ne2 c5
8.d5 0-0 9.0-0 e6 10.Nec3 Na6 11.a3 exd5 12.exd5 Bf5 13.d6 Qd7
14.Nd2 Bg4 15.Qc2 Bf5 16.Nde4 Qxd6 17.Nxd6 Bxc2 18.Bxb7 Rad8
19.Nxf7 Rxf7 20.Bxa6 Bd3 21.Rd1 c4 22.Be3 Bxc3 23.bxc3 Nd5
24.Bd4 Nc7 (Diagram) 25.Rxd3 cxd3 26.Bc4 Nd5 27.Rd1 Rc7
28.Ba2 Kf8 29.Rxd3 Rcd7 30.Bc5+ Kg7 31.Rf3 Rf7 32.Rxf7+ Kxf7
33.Bxa7 Ke6 34.Bc5 Ke5 35.Bxd5 Rxd5 36.Bb4 g5 37.h3 h5 38.Kg2
g4 39.a4 Rd2 40.hxg4 hxg4 41.Ba5 Ra2 42.Bc7+ Ke4 43.a5 Kd3 44.Bb6
1/2-1/2



Gosciniak,Maria (2090) - Zhang,Jilin (2250) [B42]

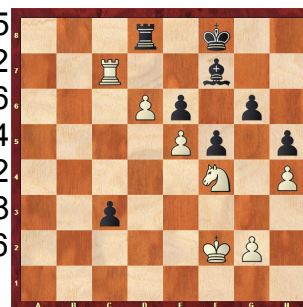
2016 Australian Womens Masters Melbourne (4.4), 17.01.2016

1.e4 c5 2.Nf3 e6 3.d4 cxd4 4.Nxd4 a6 5.c4 Nf6 6.Nc3 d6 7.Be3 b6 8.Bd3 Bb7 9.0-0 Nbd7
10.f3 Be7 11.Rc1 Qc7 12.b4 Rc8 13.Nb3 0-0 14.Na4 Qb8 15.c5 b5 16.Na5 dxc5 17.Nxc5
Nxc5 18.bxc5 Ba8 19.Qe1 Nd7 20.Qf2 Ne5 21.Be2 Nc6 22.Nxc6 Bxc6 23.a4 bxa4
24.Bxa6 Rcd8 25.Rb1 Qa8 26.Bb5 Bxb5 27.Rxb5 Bf6 28.Qe1 Rd3 29.Bf4 Bd4+ 30.Kh1 e5
31.Bd2 Qc6 32.Ra5 Ra8 33.Qe2 Rb3 34.Qc4 Rxa5 35.Bxa5 Qb5 36.Qxb5 Rxb5 37.c6
Rc5 38.c7 h5 39.g3 Kh7 40.Bb6 Rc6 41.Bxd4 exd4 42.Ra1 Rxc7 43.Rxa4 d3 44.Rd4
Rc1+ 45.Kg2 Rc2+ 46.Kg1 d2 47.Kf1 d1Q+ 48.Rxd1 Rxh2 49.Rd5 g6 50.Kg1 Ra2 51.Rd7
Kg7 52.Rd6 Kf8 53.Rc6 Ke7 54.Rb6 Kd7 55.Rf6 Ke7 56.Rb6 Kf8 57.Rc6 Kg7 58.Rb6 Kh6
59.Rf6 Kg7 60.Rb6 g5 61.Rb5 Kg6 62.Rb6+ Kg7 63.Rb5 f6 64.e5 fxe5 65.Rxe5 Kf6 66.f4
gxf4 67.gxf4 Ra4 68.Rxh5
1/2-1/2

Gu,Xiaobing (2286) - Berezina,Irina (2178) [B09]

2016 Australian Womens Masters Melbourne (4.5), 17.01.2016

1.e4 g6 2.d4 Bg7 3.Nc3 d6 4.f4 Nf6 5.Nf3 0-0 6.e5 dxe5 7.fxe5 Nd5
8.Bc4 Nb6 9.Bb3 Nc6 10.Be3 Na5 11.0-0 Nxb3 12.axb3 c6 13.Qd2
Nd5 14.Bh6 Bf5 15.Rf2 Nb4 16.Rc1 a5 17.Bxg7 Kxg7 18.Qf4 f6
19.Nh4 Be6 20.Re1 f5 21.Re3 Nd5 22.Nxd5 Bxd5 23.Rh3 Be4
24.Nf3 h5 25.Ng5 Bd5 26.Qg3 Qb6 27.c4 Bg8 28.Qc3 Qb4 29.Rd2
Qxc3 30.Rxc3 Rfd8 31.h4 a4 32.bxa4 Rxa4 33.b3 Ra3 34.Kf2 Kf8
35.Nh3 b5 36.cxb5 cxb5 37.d5 b4 38.Rc7 Rxb3 39.Nf4 Bf7 40.d6 e6
41.Rdc2 Ra3 42.Rb7 Rc3 43.Rxc3 bxc3 44.Rc7 (Diagram)



1-0

Round 4 Reserves Games

Ravichandren,Niruruthri (1368) - Lu,Lillian (1521) [E06]

2016 Australian Women's Reserves Melbourne (4.1), 17.01.2016

1.c4 e6 2.g3 d5 3.cxd5 exd5 4.d4 Nf6 5.Bg2 Be7 6.Nf3 0-0 7.0-0 Bf5 8.Nc3 c6 9.Bf4 Bd6
10.Ne5 Qe7 11.Rc1 Nbd7 12.Nxd7 Qxd7 13.Qd2 Rfe8 14.Rfe1 Rad8 15.Bg5 Be7 16.e4
dxe4 17.Bxf6 Bxf6 18.Nxe4 Bxe4 19.Bxe4 Bxd4 20.Rcd1 c5 21.Kg2 g6 22.b4 b6 23.bxc5
bxc5 24.Rb1 Rb8 25.Qf4 Rb2 26.Rxb2 Bxb2 27.Rb1 Be5 28.Qf3 Rb8 29.Rd1 Qe7 30.Bc6
Qf6 31.Rd7 Qxf3+ 32.Kxf3 Rb6 33.Bd5 Rf6+ 34.Ke4 Bd4 35.Rxa7 Rxf2 36.a4 Re2+
37.Kd3 Re3+ 38.Kc4 Rc3+ 39.Kb5 Rc2 40.Rxf7 Kh8 41.Ra7 Rxh2 42.a5 Be5 43.a6 Bxg3
44.Ra8+ Kg7 45.Rg8+ Kh6 46.a7 Rb2+ 47.Kc6 c4 48.a8Q Rb8 49.Rxb8 Bxb8 50.Qxb8 c3
51.Qh2+ Kg7 52.Kc5 c2 53.Qxc2 Kh6 54.Qh2+ Kg7 55.Kd4 g5 56.Ke5 h6 57.Qh5 g4
58.Qf7+ Kh8 59.Qg8#

1-0

Szuveges,Narelle (1800) - Wang,Eva (1293) [D06]

2016 Australian Women's Reserves Melbourne (4.2), 17.01.2016

1.d4 d5 2.c4 Bf5 3.cxd5 Nf6 4.f3 Bxb1 5.Rxb1 Nxd5 6.e4 Nf6 7.Be3 e6 8.Ne2 Nbd7 9.Nc3 c5 10.Bb5 a6 11.Bxd7+ Nxd7 12.0-0 cxd4 13.Bxd4 e5 14.Bf2 Bc5 15.Bxc5 Nxc5 16.Qxd8+ Rxd8 17.Rfd1 0-0 18.Rd5 Rxd5 19.Nxd5 f6 20.Rd1 Kf7 21.b4 Ne6 22.Rc1 Kg6 23.Kf2 Nf4 24.Nxf4+ exf4 25.Rc7 Rf7 26.Rxf7 Kxf7 27.Ke2 Ke6 28.Kd3 Kd7 29.Kd4 Kd6 30.a4 b5 31.a5 h6 32.h3 g5 33.Kc3 Ke5 34.Kd3 Ke6 35.Kd4 Kd6 36.h4 gxh4 37.Kd3 Ke5 38.Kc3 Ke6 39.Kd4 Kd6 40.Kc3 Ke5 41.Kd3 Ke6 42.Kd4

½-½

Middleton,Jody (1494) - Krstevska,Tanya (1584) [E90]

2016 Australian Women's Reserves Melbourne (4.3), 17.01.2016

1.d4 Nf6 2.c4 g6 3.Nc3 Bg7 4.e4 d6 5.h3 c6 6.Nf3 Na6 7.Be2 Qb6 8.a3 0-0 9.Ra2 Nd7 10.Be3 Qd8 11.Qd2 e5 12.d5 c5 13.g4 Nc7 14.Bh6 f6 15.Bxg7 Kxg7 16.h4 Nb6 17.g5 Bg4 18.b3 Bxf3 19.Bxf3 fxe3 20.Bg2 gxh4 21.Qe3 Qf6 22.Ne2 Rf7 23.Ng1 Qf4 24.Nf3 Qxe3+ 25.fxe3 Nd7 26.Rxh4 Nf8 27.Bh1 a5 28.Rah2 Kg8 29.Ng5 Re7 30.a4 Rae8 31.Rf2 Rg7 32.Rf6 Rd8 33.Rh2 h5 34.Rhf2 Nh7 35.Nxh7 Kxh7 36.Bg2 Na6 37.Bh3 Nb4 38.Kd2 Na6 39.Rf7 Nc7 40.Be6 h4 41.Rxg7+ Kxg7 42.Rf7+ Kh6 43.Rxc7 Kg5 44.Rf7 Rh8 45.Rf3 Kh5 46.Ke2 Rh7 47.Kf2 g5 48.Bh3 Rg7 49.Rf5 Rg8 50.Kf3 Rg6 51.Bg4+ Kh6 52.Kg2 Rg7 53.Kh3 Kg6 54.Rf8 Rf7 55.Bf5+ Kg7 56.Rd8 Rf6 57.Rd7+ Kh6 58.Rh7#

1-0

Round 5 Reserves Games

Krstevska,Tanya (1584) - Ravichandren,Niruruthri (1368) [A01]

2016 Australian Women's Reserves Melbourne (5.1), 17.01.2016

1.b3 Nf6 2.Bb2 d5 3.e3 g6 4.Bxf6 exf6 5.Ne2 Bg7 6.d4 0-0 7.g3 Bg4 8.Bg2 Qd7 9.0-0 Re8 10.c4 c6 11.Nbc3 dxc4 12.bxc4 Bh3 13.Qb3 Bxg2 14.Kxg2 Na6 15.a4 c5 16.Rfd1 f5 17.Qb5 Qc7 18.Nd5 Qc6 19.Rab1 Rab8 20.Qxc6 bxc6 21.Rxb8 Nxb8 22.Ndc3 cxd4 23.Nxd4 Rd8 24.Rb1 c5 25.Nde2 Nc6 26.Nd5 a5 27.Rb5 Bf8 28.Nef4 Rb8 29.Nd3 Rxb5 30.axb5 Nb4 31.Nb2 Bd6 32.Kf3 Kf8 33.h4 h5 34.e4 Ke8 35.exf5 gxf5 36.Nf6+ Kd8 37.Nxh5 Nd3 38.Nxd3 a4 39.Nc1 Kc7 40.Nf4 Kb6 41.Ke2 Ka5 42.Kd3 a3 43.Nd5 Be5 44.h5 Bb2 45.Na2 Ka4 46.Ndc3+ Kb3 47.b6 Bc1 48.b7 Kb2 49.b8Q+

1-0

Wang,Eva (1293) - Middleton,Jody (1494) [D02]

2016 Australian Women's Reserves Melbourne (5.2), 17.01.2016

1.d4 d5 2.Bf4 c6 3.e3 Nf6 4.Nf3 Qb6 5.b3 Bf5 6.Bd3 Bxd3 7.Qxd3 e6 8.0-0 Nbd7 9.Nbd2 Nh5 10.Be5 f6 11.Bg3 Nxg3 12.hxg3 Bd6 13.c4 Qd8 14.Rac1 Rc8 15.Rc2 0-0 16.Rfc1 f5 17.cxd5 exd5 18.Nh4 Bb8 19.f4 Qf6 20.Nb1 g5 21.Nf3 gxf4 22.gxf4 Rf7 23.Kf2 Rg7 24.Rh1 Rg4 25.Ke1 Re8 26.Kd2 Rxg2+ 27.Kc1 Rxc2+ 28.Qxc2 Rxe3 29.Qg2+ Qg7 30.Qc2 Bxf4 31.Kd1 Qe7 32.Qg2+ Kf8 33.Rg1 Nf6 34.Nh4 Rg3 35.Qf1 Rxg1 36.Qxg1 Qe4 37.Na3 Qd3+ 38.Ke1 Bd2+ 39.Kf2 Be3+ 40.Kg2 Bxg1 41.Kxg1 Qg3+ 42.Kf1 Ng4 43.Ng6+ hxg6 44.Ke2 Qe3+ 45.Kd1 Nf2+ 46.Kc2 Qd3+ 47.Kc1 Qd1+ 48.Kb2 Nd3+ 49.Kc3 b5 50.Nxb5 cxb5 51.a4 b4#

0-1

Lu,Lillian (1521) - Szuveges,Narelle (1800) [D27]

2016 Australian Women's Reserves Melbourne (5.3), 17.01.2016

1.e4 c6 2.d4 d5 3.exd5 cxd5 4.c4 dxc4 5.Bxc4 Nf6 6.Nc3 e6 7.Nf3 Be7 8.Bf4 a6 9.a4 0-0 10.0-0 Nc6 11.Qd2 Na5 12.Ba2 Qb6 13.Qe2 Bd6 14.Bxd6 Qxd6 15.Rab1 Nc6 16.Rfd1 Nb4 17.Bc4 Nbd5 18.Ne4 Qb4 19.Nxf6+ Nxf6 20.Ra1 Bd7 21.b3 Bc6 22.Ne5 Bd5 23.Qd2 Qxd2 24.Rxd2 Rfd8 25.Rdd1 Rac8 26.Rab1 Rc7 27.Bxd5 Nxd5 28.Rbc1 Rdc8 29.Nd3 b6 30.Rxc7 Rxc7 31.Rc1 Rxc1+ 32.Nxc1 Kf8 33.Kf1 Ke7 34.Ke2 Kd6 35.Nd3 a5 36.g3 Nf6 37.f3 Kc6 38.Ne5+ Kd5 39.Kd3 Ne8 40.Nxf7 h6 41.Ne5 Nf6 42.Nc4 Kc6

½-½